

Use of this plan indicates understanding and agreement with the following:

Carini Engineering Designs, P.C. has not been retained for construction observation or administration and assumes no responsibility for field changes, contractor methods, material selections, product performance or warranty, code or document compliance or safety during construction.

It is a violation of Section 2209 (2) of the Education Law for any person, unless acting under the direction of a Licensed Engineer to alter any item in these documents in any way. Any licensee who alters these documents is required by law to affix his/her seal and signature and date with notification "altered by" followed by a specific description of changes made.

The seal affixed to these documents is for the work performed by Carini Engineering Designs, P.C. on the original documents and does not relate to any sealed date by others. Our liability is limited to the amount of the fee paid.

These plans are judgments of service for the construction of one building only and are not to be copied in any form without the express written permission of Carini Engineering Designs, P.C. The plans & documents represented on this sheet are copyrighted and violators of this copyright will be prosecuted.

The contractor is responsible for checking dimensions and site conditions and to report any errors or omissions to this office before the start of construction. Before dimensions change, these procedures must be followed. All materials, products, fixtures, and equipment shall be installed in accordance with manufacturer's installation instructions and all applicable codes.

These plans comply with the 2020 code.
© COPYRIGHT 2021

Revision
SECOND ITERATION 1/26/21 T.J.H.

Project
ONE STORY DUPLEX

Client
CHRISANTHA, INC.

Job Location
THE MOORINGS ON KEUKA
PENNY NY

Drawing Title
ELEVATIONS

Drawn By
T.J.H.

Checked By

Date
JULY, 2021

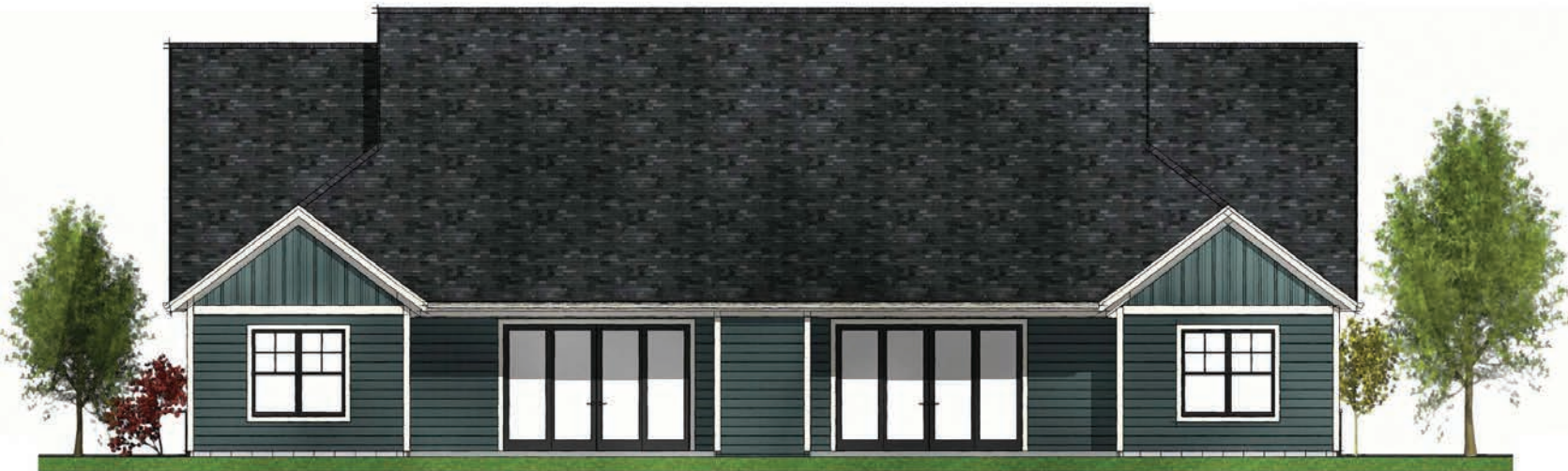
Job No.
38502

Sheet
1 of 3



FRONT ELEVATION

TOTAL BUILDING FLOOR AREA = 2602 SQ. FEET



REAR ELEVATION



PERSPECTIVE VIEW

Use of this site indicates understanding and agreement with the following:

Carini Engineering Designs, P.C. has not been retained for construction observation or administration and assumes no responsibility for field changes, contractor methods, material selection, product performance or warranty, code or document compliance or safety during construction.

It is a violation of Section 7209 (2) of the Education Law for any person, unless acting under the direction of a licensed Engineer to alter any item in these documents in any way. Any licensee who alters these documents is required by law to affix his/her seal and signature and date with notification "altered by" followed by a specific description of changes made.

The seal affixed to these documents is for the work performed by Carini Engineering Designs, P.C. on the original documents and does not relate to any other date by others. Our liability is limited to the amount of the fee paid.

These plans are instruments of service for the construction of one building only and are not to be copied in any form without the express written permission of Carini Engineering Designs, P.C. The plans & items represented on this sheet are copyrighted and violators of this copyright will be prosecuted.

The contractor is responsible for checking dimensions and site conditions and to report any errors or omissions to the office before the start of construction. Written dimensions always take precedence over scaled dimensions. All materials, products, fixtures, and equipment shall be installed in accordance with manufacturer's installation instructions and all applicable codes. These plans comply with the 2020 code.

© COPYRIGHT 2021

Revisions
SECOND ITERATION 7/26/21 TJM

Project
ONE STORY DUPLEX

Client
CHRISANTHA, INC.

Job Location
THE MOORINGS ON KEUKA
PENNY TALK, NY

Drawing Title
PERSPECTIVE VIEW

Drawn By
TJM

Checked By

Date
JULY, 2021

Job No.
38502

Sheet
1 of 3